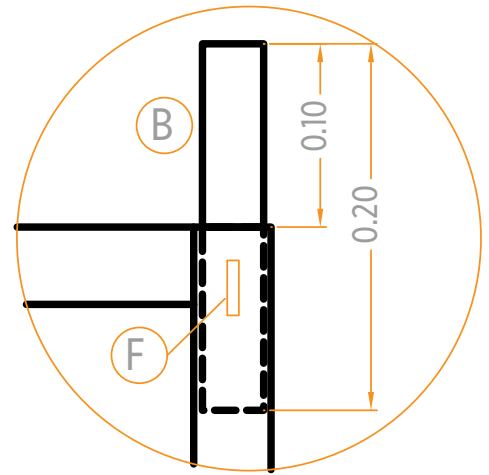
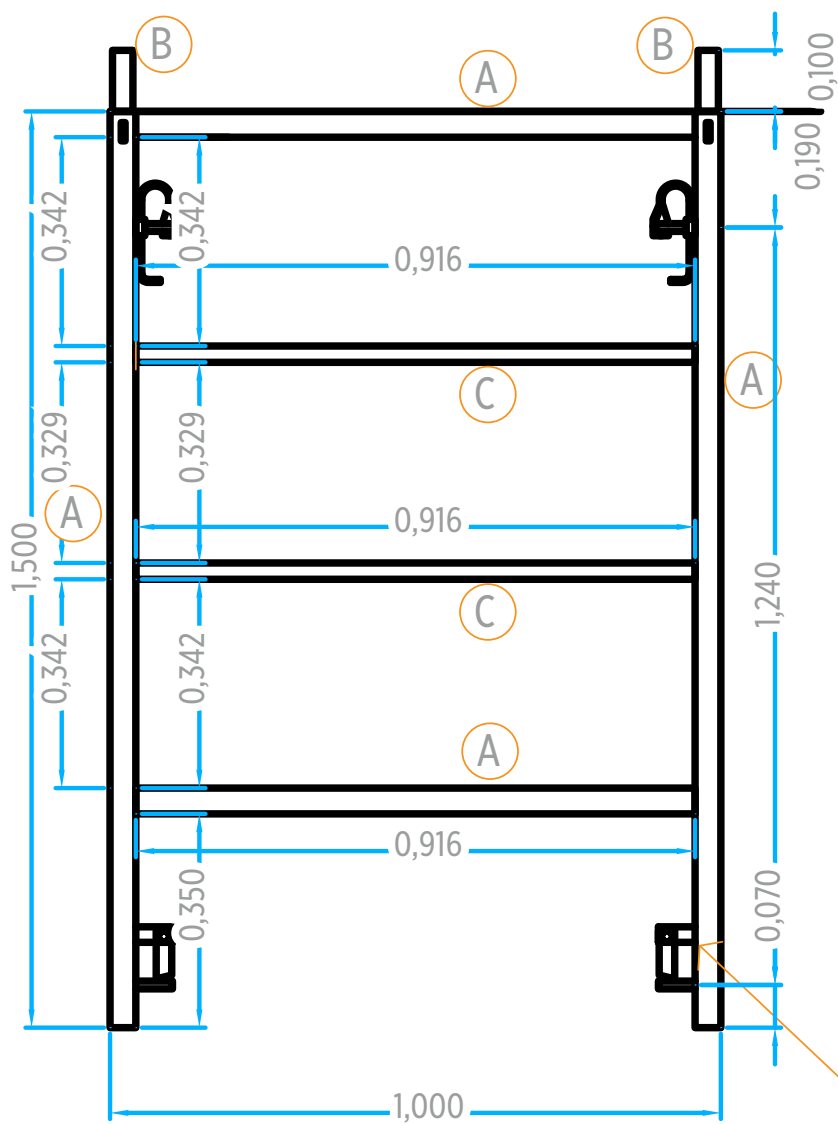
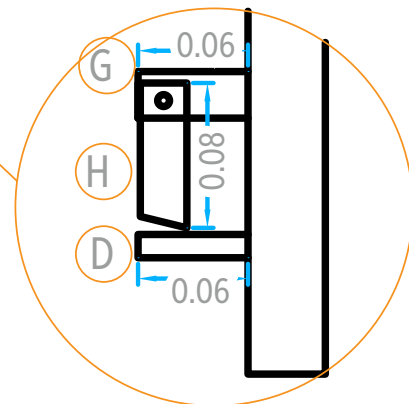


Marco estándar de 1.00 x 1.50



- (A) TUBO NEGRO CED.30 DE 1 1/4"
- (B) TUBO NEGRO CED.30 DE 1"
- (C) TUBO NEGRO CED.30 DE 3/4"
- (D) REDONDO DE 1/2"
- (E) SOLERA 3/16" X 1"
- (F) ALAMBRON DE 1/4"



		DIAM. NOMINAL		DIAM EXTERIOR		PESO TEORICO		POR MARCO
		PULG	MM	PULG	MM	KG/M	MTS	KG
(A)	TUBO NEGRO CED.30	1 1/4"	32	1.660"	42.20	2.25	3.84	8.64
(B)	TUBO NEGRO CED.30	1"	25	1.315"	33.40	1.48	0.40	0.592
(C)	TUBO NEGRO CED.30	3/4"	19	1.050"	26.70	1.16	1.84	2.13
(D)	REDONDO	1/2"	12.70			0.99	0.30	0.29
(E)	SOLERA	3/16" X 1"	4.8X25.4			0.950	1.20	1.14
(F)	ALAMBRON	1/4"	6.35			0.248	0.22	0.054
PESO TOTAL POR MARCO								12.846